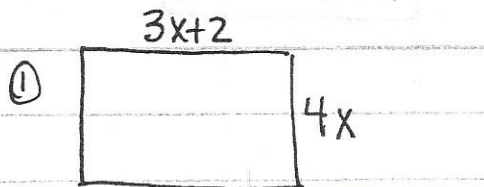


Area & Perimeter Notes

Area = the space inside an object

Perimeter = the distance around the outside of an object

Find the area and perimeter of each shape.

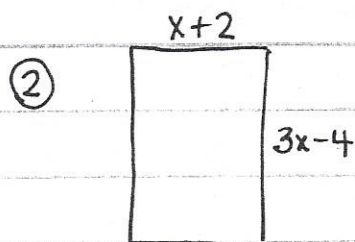


$$A = 4x(3x+2) = \boxed{12x^2 + 8x}$$

$$P = 2(3x+2) + 2(4x)$$

$$= 6x+4 + 8x$$

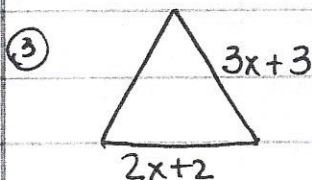
$$= \boxed{14x+4}$$



$$A = (x+2)(3x-4)$$

$$= 3x^2 - 4x + 6x - 8 = \boxed{3x^2 + 2x - 8}$$

Find the missing side length.

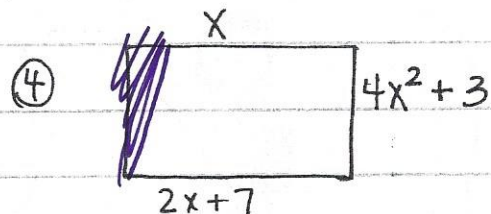


$$P = 8x+9$$

$$(8x+9) - (2x+2+3x+3)$$

$$(8x+9) - (5x+5)$$

$$\boxed{3x+4}$$



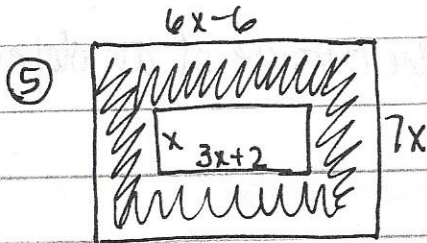
$$P = 4x^2 + 5x + 10$$

$$(4x^2 + 5x + 10) - (x + 4x^2 + 3 + 2x + 7)$$

$$(4x^2 + 5x + 10) - (4x^2 + 3x + 10)$$

$$\boxed{2x}$$

Find the area of the shaded region.

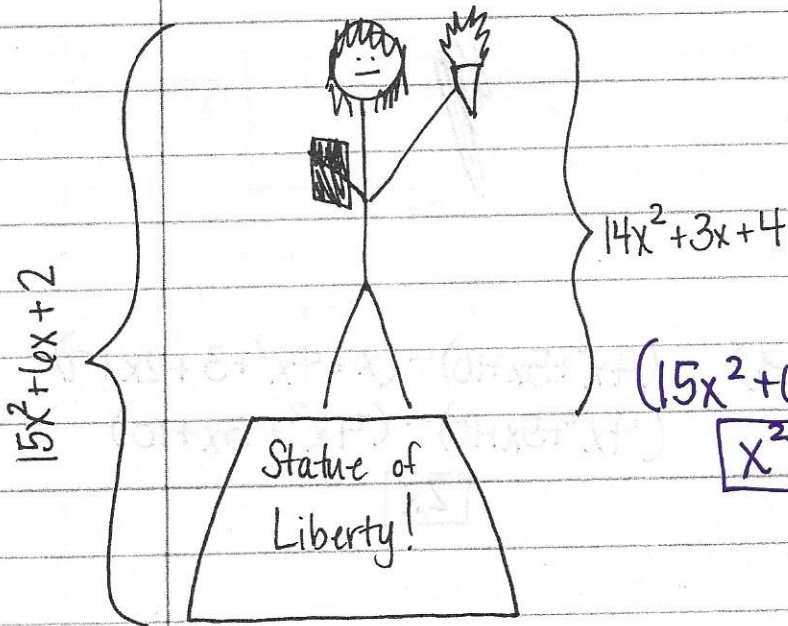


$$7x(6x-6) - x(3x+2)$$

$$42x^2 - 42x - 3x^2 - 2x$$

$$\boxed{39x^2 - 44x}$$

Find the missing length.



How tall is the base
Lady Liberty stands
on?

$$(15x^2 + 6x + 2) - (14x^2 + 3x + 4)$$

$$\boxed{x^2 + 3x - 2}$$